

## Lock-Fast

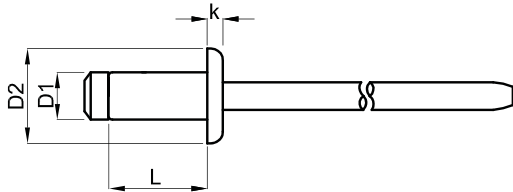
Dome Head with Grooved Mandrel

**Body Material**

Stainless Steel

**Mandrel Material**

Stainless Steel



∅ 6,4mm

D1	PART #	D2 +/-0,2	k ≤					
6,4x10,5	RL64-105-RNR	13,6	3,3	2,8-4,8	16000 N	8800 N		2.500
6,4x12,5	RL64-125-RNR			4,8-6,8				2.500
6,4x14,5	RL64-145-RNR			6,8-8,8				2.500
6,4x16,5	RL64-165-RNR			8,8-10,8				2.500
6,4x18,5	RL64-185-RNR			10,8-12,8				2.500
6,4x20,5	RL64-205-RNR			12,8-14,8				2.500

= 6,7 - 6,9mm